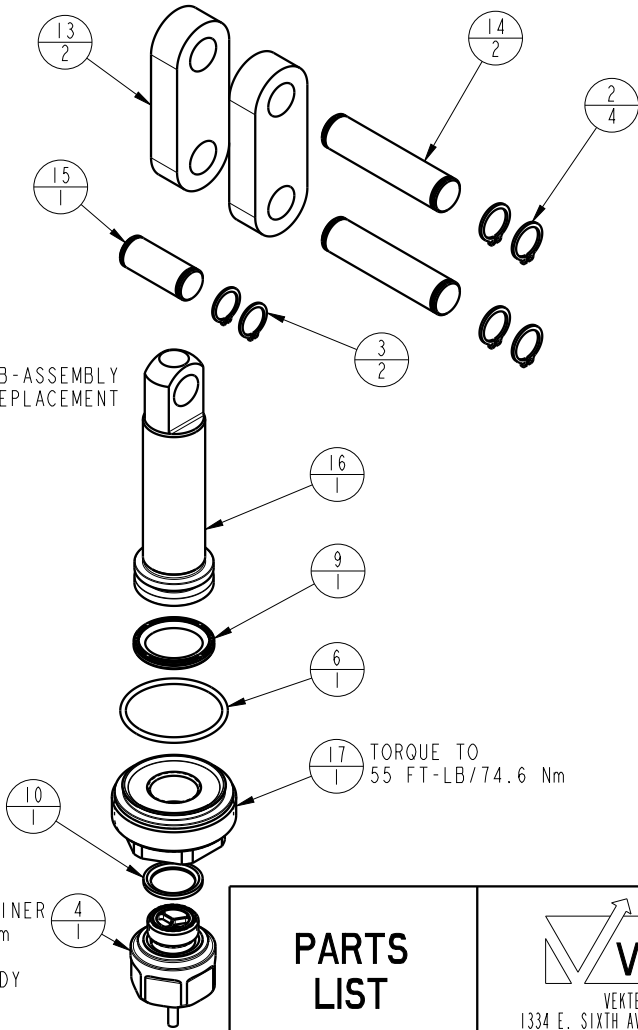
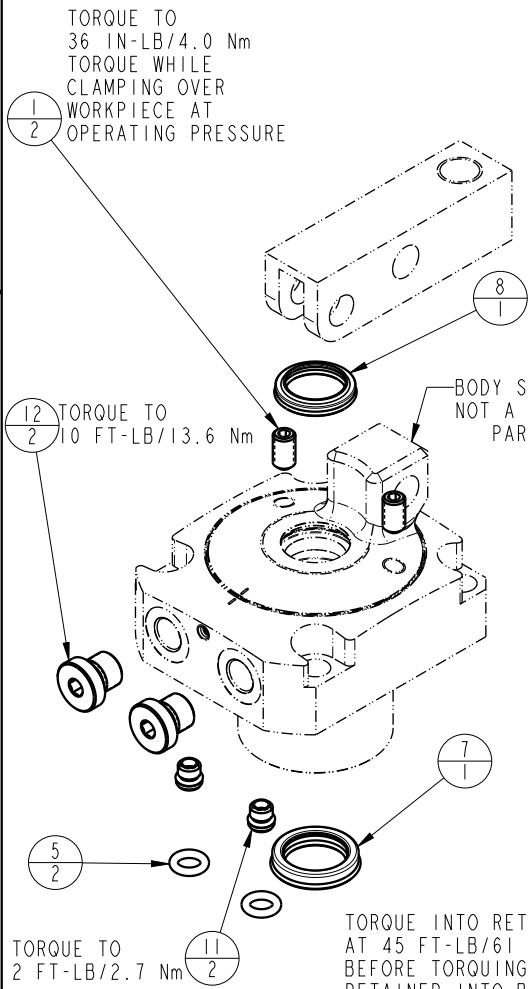


NO	QTY	PART NO	DESCRIPTION	STD SEAL KIT
1	2	21500320	SCREW, SET, CUP PT, M8 X 1.25 X 14	
2	4	23050023	RING, RTNG, EXT, 0.500	X
3	2	23050038	RING, RTNG, EXT, 0.469	X
4	1	29740200	SENSOR, ULTRASONIC, M12, 1m	
5	2	39051088	O-RING, (8mm X 3)	X
6	1	39051152	O-RING, (34mm X 2)	X
7	1	39052062	SEAL, ROD, RSD, 22, 85A, AU	X
8	1	39053043	SEAL, WIPER, SNAP IN, WED, 22, 94A, AU	X
9	1	39056034	SEAL, CAP, PISTON, 28, 94A, AU	X
10	1	43000040	O-RING, DIN3869, M18	
11	2	43061122	PLUG, SOCH, METRIC, M8	
12	2	43068006	PLUG, PORT, HOLLOW HEX, G1/4	
13	2	81600149	LINK, LC, 7MPa, 63B	
14	2	81600154	PIN, LINK, LC, 7MPa, 63B	
15	1	81600159	PIN, PLUNGER, LC, 7MPa, 63B	
16	1	81600254	PLUNGER, LC, TL360, DA, 3600/15.9kN	
17	1	81600332	CAP, LC, TL360, 3600/15.9kN, US	
N/A	N/A	60160504	KIT, SEAL, ASSY, LC, TL360, DA, 15.9 kN	NOTED



PARTS LIST	
	VEKTEK, INC. 1334 E. SIXTH AVE. P.O. BOX 625 EMPORIA, KS. 66801 U.S.A.
ASSEMBLIES AFFECTED 41622800US	PARTS LIST, ASSY, LC, TL360, DA, 15.9kN, US
SIZE A	MPL1638
	REV A

A	5660	RELEASE	ALS	3/24/25
REV	IN ACCORDANCE WITH ECN	EFFECTIVE DATE	REVISED BY	DATE
DRW BY:	ALS	DRAWING STATUS: Released PRODUCTION APPROVED FOR RELEASED STATUS ONLY		
DATE:	3/20/25			